

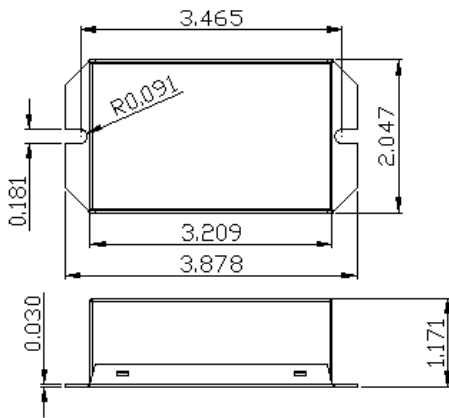


XICATO® Controls

UL/CE pending

■ Mechanical and Thermal

Dimensions	L 3.878" × W2.047" × H 1.171"
Weight	245 g
Lead Wire Length	6" (Standard)
Max. Case Operation Temp.	80°C



* Dimension in Inch

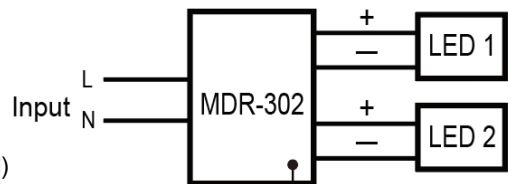
■ Features

- ✓ 120-277V Universal input
- ✓ Constant Current, 2 Channel Output
- ✓ Support XICATO Control dimming
- ✓ Wireless Control, Diagnose System – Real Time/Historical Data Supported by XICATO Control
- ✓ Active Power Factor
- ✓ Compact size
- ✓ Class 2
- ✓ 5 Year Warranty

■ Electrical

Maximum Load	20W
Minimum Load	17W
Input Voltage	120-277V
Output Voltage	15-20VDC
Output Current	500mA (each channel)
Power Factor	>0.90
Max. Harmonic Distortion	<20%
Efficiency	80 typ.
No Load Loss	<1 W

■ Wiring Diagram



XICATO® Controls

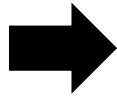
■ Factory tool

- **3 Steps process**

Download



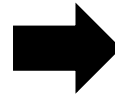
XICATO
Control panel
V1.7.27.5



Download App



XIMtroller



Use App to
test LED light.

STEP 1

XICATO Control panel – fixture ID

Network	ID	Name	Device	Intensity	Power	Temp	Vin	Hours	RSSI	Status	State	DALI	Tadv
Unsecured	1	1	Bootload Mode		0.0	0	0.00		-53				1.2
Unsecured	2	2	Macron <ID 0>	100.0%	N/A	47	0.00	31	-63	OK	0	N/A	8.0
Unsecured	4	4	Macron <ID 0>	100.0%	N/A	53	0.00	30	-67	OK	0	N/A	1.0
Unsecured	5	5	Macron <ID 0>	100.0%	N/A	52	0.00	37	-58	OK	0	N/A	1.0



Macron Associate Co. – Power Supply Team

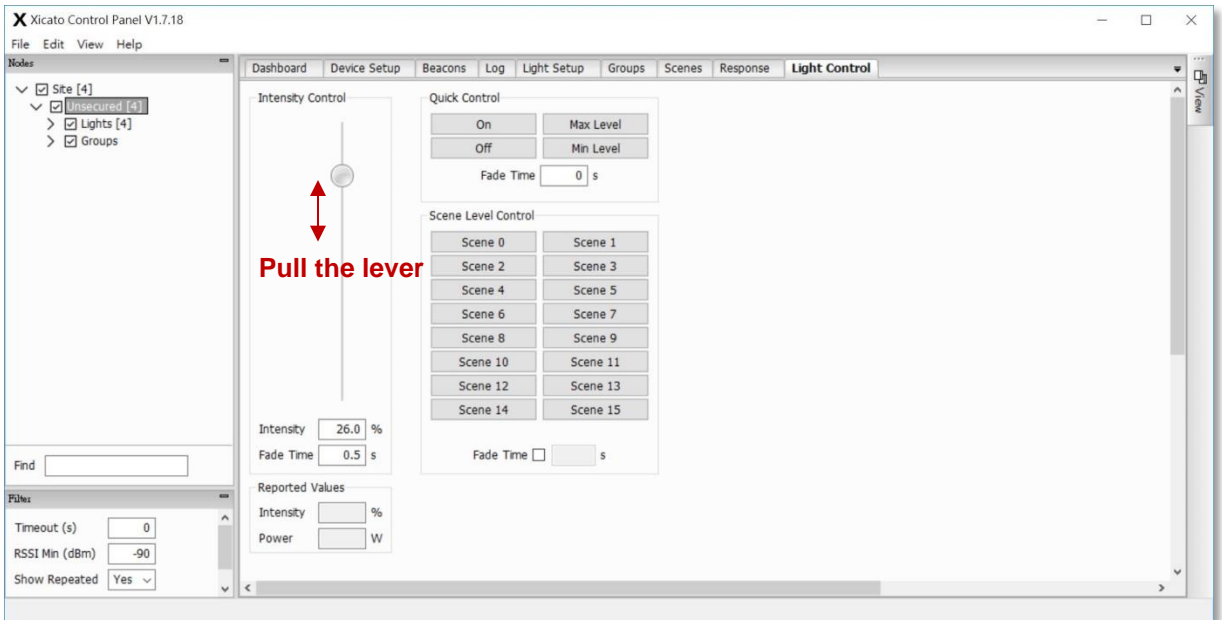
NO.352, Perng-Yi Road, Taiping, Taichung, Taiwan 411

TEL: 886-4-22708357 FAX: 886-4-22767307 Email: macron@macrongroup.com

C0719

STEP 2

XICATO Control panel – Intensity



STEP 3

Ximroller App (only available on IOS)

